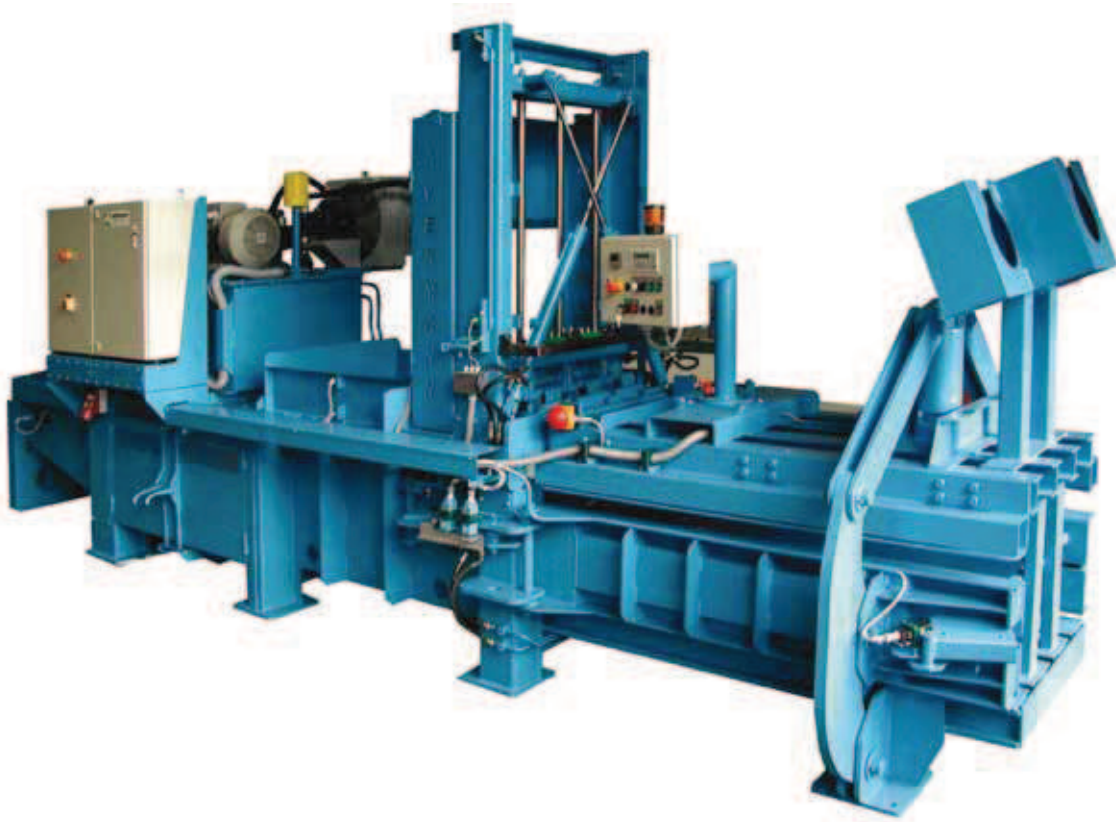


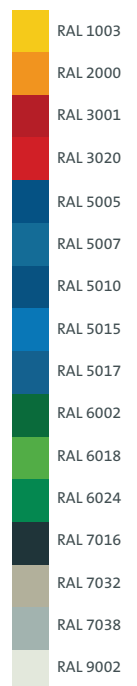


## HORIZONTAL BALER TYPE AVOS 88/108

High compaction degree but energy-efficient



Standard  
RAL-colours



### Go for flexibility

You will get your horizontal baler type AVOS 88/108 optionally...

- ... with fully automatic channel adjustment
- ... with AVERMANN special press-ram for pressing bulky materials (suitable for AVOS 108, only)
- ... with oil-/air cooling unit for long term operation

### Your advantages:

- ✓ Low energy consumption
- ✓ Individual optional equipment
- ✓ Optimal use with little space availability

Further RAL-colours on demand at extra charge.



## ■ AVOS 88 with manual feeding



## ■ AVOS 108 bale discharge



## Reliability you will appreciate!

**Continuous compaction of recyclable- and waste materials:** Independent of pressing paper, cardboard, film or residual waste - the AVERMANN horizontal baler type AVOS 88/108 satisfies due to high efficiency and economic feasibility. The highly compacted and

fully automatically bound bales enable a space saving storage and cost-effective transport. Convince yourself of the longevity and the low energy consumption of this quality product!

### Technical data

	AVOS 88-7.5/30	AVOS 88-11/30	AVOS 108-7.5/30	AVOS 108-11/40
Machine length	4000 mm	4000 mm	6300 mm	6300 mm
Machine width	1670 mm	1670 mm	1700 mm	1700 mm
Machine height	2480 mm	2480 mm	2520 mm	2520 mm
Feeding hopper cross section	800 x 800 mm	800 x 800 mm	1000 x 800 mm	1000 x 800 mm
Dead weight approx.	3600 kg	3700 kg	6800 kg	6900 kg
Bale size (W x H)	800 x 550 mm	800 x 550 mm	800 x 550 mm	800 x 550 mm
Bale weight* up to	250 kg	250 kg	250 kg	300 kg
Channel adjustment	manually	manually	3-sided automatically	3-sided automatically
Cycle time (empty)	22 sec	14 sec	26 sec	17 sec
Idle speed capacity (theoretically)	60 m <sup>3</sup> /h	94 m <sup>3</sup> /h	60 m <sup>3</sup> /h	95 m <sup>3</sup> /h
Throughput** 35 kg/m <sup>3</sup> (cardboard)	1.6 t/h	2.6 t/h	1.6 t/h	2.6 t/h
Throughput** 60 kg/m <sup>3</sup> (cardboard, paper)	2.8 t/h	4.5 t/h	2.8 t/h	4.5 t/h
Throughput** 100 kg/m <sup>3</sup> (newspapers)	4.7 t/h	7.5 t/h	4.8 t/h	7.5 t/h
Specific press force	68.2 N/cm <sup>2</sup>	68.2 N/cm <sup>2</sup>	68.2 N/cm <sup>2</sup>	90.9 N/cm <sup>2</sup>
<b>Press force</b>	<b>300 kN</b>	<b>300 kN</b>	<b>300 kN</b>	<b>400 kN</b>
<b>Drive capacity</b>	<b>7.5 kW</b>	<b>11 kW</b>	<b>7.5 kW</b>	<b>11 kW</b>

\* depending on bale length and material, \*\* relating to apparent weight

### Valid for all machine types

Adjustable bale length; Binding: 3-fold vertically; Electricity: 3 x 400 V, N, PE/50 Hz



## HORIZONTAL BALER TYPE AVOS 1211

High efficiency in compact design



### Standard RAL-colours

	RAL 1003
	RAL 2000
	RAL 3001
	RAL 3020
	RAL 5005
	RAL 5007
	RAL 5010
	RAL 5015
	RAL 5017
	RAL 6002
	RAL 6018
	RAL 6024
	RAL 7016
	RAL 7032
	RAL 7038
	RAL 9002

Further RAL-colours on demand at extra charge.

### Go for flexibility

You will get your horizontal baler type AVOS 1211 optionally...

- ... with oil-/air cooling unit and oil heating element
- ... with feeding conveyor to fill the baler evenly and continuously
- ... with large display to indicate the bale length
- ... with cutting-edge stamper

### Your advantages:

- ✓ Solid, torsion-resistant construction
- ✓ Individual equipment options
- ✓ Vertical 4-fold binding
- ✓ Compact design



## ■ AVOS 1211 with conveyor belt feeding



## ■ Hydraulic unit of the AVOS 1211



## The entry model with proven technique

**Space saving with full efficiency:** Deciding on the AVERMANN horizontal baler type AVOS 1211 you have latest-state-of-the-art technology in solid design. Thanks to the compact design only little space is needed. Thus

you profit from a 'slim' design with all advantages regarding functionality and required quality. Moreover the horizontal baler type AVOS 1211 offers a fully automatic operation as well as the proven 4-fold binding.

### Technical data

	AVOS 1211-15/50
Machine length	5800 mm
Machine width	1800 mm
Machine height	3000 mm
Feeding hopper cross section	1200 x 1100 mm
Dead weight approx.	8500 kg
Bale size (W x H)	1100 x 700 mm
Bale length	adjustable
Bale weight* up to	400 kg
Binding	4-fold vertically
Channel adjustment	semi-automatically
Electricity	3 x 400 V, N, PE/50 Hz
Cycle time (empty)	34 sec
Idle speed capacity (theoretically)	99 m <sup>3</sup> /h
Throughput** 35 kg/m <sup>3</sup> (cardboard)	2.7 t/h
Throughput** 60 kg/m <sup>3</sup> (cardboard, paper)	4.7 t/h
Throughput** 100 kg/m <sup>3</sup> (newspapers)	6.5 t/h
Specific press force	64.9 N/cm <sup>2</sup>
<b>Press force</b>	<b>500 kN</b>
<b>Drive capacity</b>	<b>15 kW</b>

\* depending on bale length and material, \*\* relating to apparent weight



## HORIZONTAL BALER TYPE AVOS 1410/1411

Well-proven technology for special demands



### Standard RAL-colours

	RAL 1003
	RAL 2000
	RAL 3001
	RAL 3020
	RAL 5005
	RAL 5007
	RAL 5010
	RAL 5015
	RAL 5017
	RAL 6002
	RAL 6018
	RAL 6024
	RAL 7016
	RAL 7032
	RAL 7038
	RAL 9002

Further RAL-colours on demand at extra charge.

### Go for flexibility

You will get your horizontal baler type AVOS 1410/1411 optionally...

- ... with AVERMANN special press-ram to bale bulky materials (suitable for AVOS 1410, only)
- ... with feeding conveyor belt to fill the baler continuously
- ... with wire end control unit to change the wires easily

### Your advantages:

- ✓ Separate heating, cooling and filter cycle for the hydraulic oil
- ✓ Different drives depending on requirement
- ✓ Well-proven technology thanks to more than 25 years of experience



## ■ Horizontal baler type AVOS 1410



## ■ AVERMANN special press-ram



## AVERMANN's classic

**Go for efficiency for capacious waste- and recyclable fractions:** The horizontal baler type AVOS 1410/1411 convinces by first-class quality and high productivity. Special features are the large feeding chute, the proven binding technique and the high press force. Due to the integrated heating- and cooling cycle for the hydraulic

oil the horizontal baler can be operated trouble-free, also in the case of extreme temperatures. The electro-hydraulic drive up to 45 kW is designed for high throughput so that the machine is perfectly suited for being operated on central waste disposal sites, too.

### Technical data

	AVOS 1410-22/50	AVOS 1410-30/60	AVOS 1410-37/70	AVOS 1410-45/80
Machine length	8400 mm	8400 mm	8400 mm	8400 mm
Machine width	2400 mm	2400 mm	2400 mm	2400 mm
Machine height	3770 mm	3770 mm	3770 mm	3770 mm
Feeding hopper cross section	1400 x 1000 mm	1400 x 1000mm	1400 x 1000 mm	1400 x 1000 mm
Dead weight approx.	15000 kg	15000 kg	16000 kg	16500 kg
Bale size (W x H)	1100 x 700 mm	1100 x 700 mm	1100 x 700 mm	1100 x 700 mm
Bale weight* up to	450 kg	500 kg	550 kg	600 kg
Channel adjustment	3-sided automatically	3-sided automatically	3-sided automatically	3-sided automatically
Cycle time (empty)	13.3 sec	12 sec	12 sec	16 sec
Idle speed capacity (theoretically)	266 m <sup>3</sup> /h	304 m <sup>3</sup> /h	304 m <sup>3</sup> /h	227 m <sup>3</sup> /h
Throughput** 35 kg/m <sup>3</sup> (cardboard)	5.5 t/h	6.3 t/h	6.3 t/h	6.0 t/h
Throughput** 60 kg/m <sup>3</sup> (cardboard, paper)	7.5 t/h	8.0 t/h	10.9 t/h	10.5 t/h
Throughput** 100 kg/m <sup>3</sup> (newspapers)	9.7 t/h	14.0 t/h	18.2 t/h	17.5 t/h
Specific press force	64.9 N/cm <sup>2</sup>	77.9 N/cm <sup>2</sup>	90.9 N/cm <sup>2</sup>	103.9 N/cm <sup>2</sup>
Press force	500 kN	600 kN	700 kN	800 kN
Drive capacity	22 kW	30 kW	37 kW	45 kW

\* depending on bale length and material, \*\* relating to apparent weight

**AVOS 1411:** The horizontal baler type AVOS 1411 characterised by a short structural shape (L = 6250 mm). Further information is available on request.

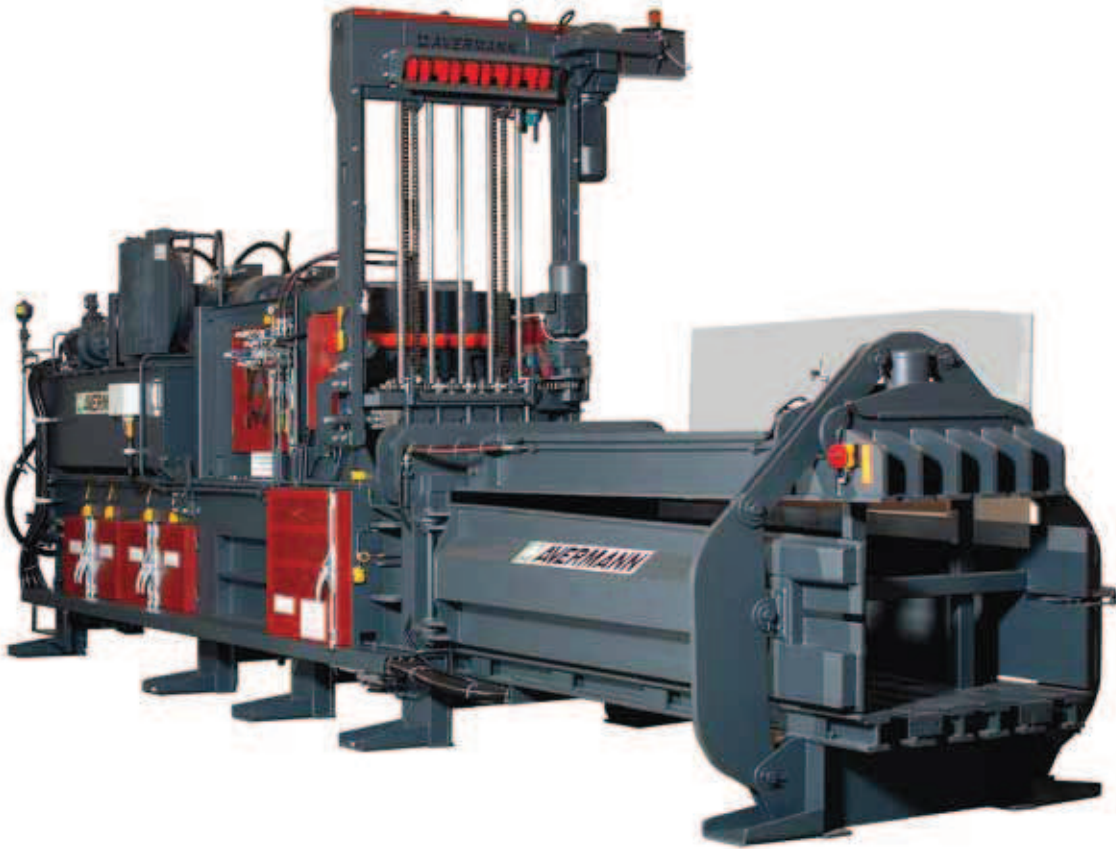
### Valid for all machine types

Adjustable bale length; Binding: 4-fold vertically; Electricity: 3 x 400 V, N, PE/50 Hz

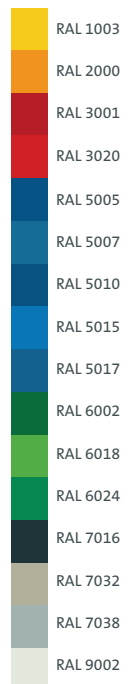


## HORIZONTAL BALER TYPE AVOS 1410 A5

Flexible solutions for high demands



Standard  
RAL-colours



### Go for flexibility

You will get your horizontal baler type AVOS 1410 A5 optionally...

- ... with multifunctional touch-screen display for function and signal queries
- ... with conveyor belt to feed the baler continuously
- ... with AVERMANN special press-ram for pressing bulky materials

### Your advantages:

- ✓ Inherently stable bales thanks to vertical 5-fold binding
- ✓ Low default risk due to two separate drive units
- ✓ Well-proven technology thanks to more than 25 years of experience

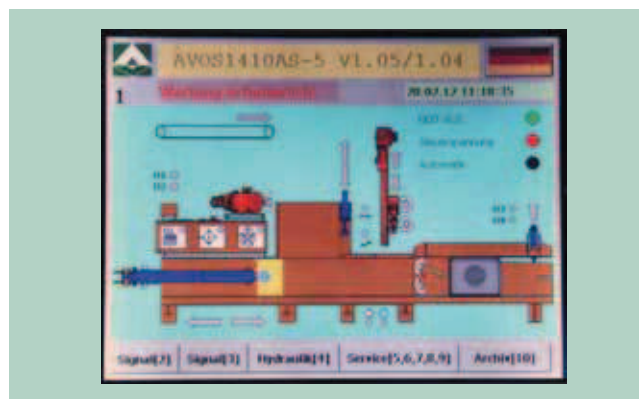
Further RAL-colours on demand at extra charge.



## ■ Automated, vertical 5-fold binding



## ■ Multifunctional touch-screen display



## Flexible and tailor-made

**Optimum compaction of expansive goods and saleable recyclable materials:** This type of baler is based on the experience and knowledge of horizontal baler type AVOS 1410 and raises the bar. In addition the drive of this baler can be effected via one or two axial piston pumps. Depending on respective application and re-

quirement this machine can be used flexibly. On the one hand a power-saving drive with only one pump and on the other hand a high throughput by actuating the second pump can be reached. The 5-fold binding system guarantees inherently stable bales - even with bulky materials. Convince yourself!

### Technical data

	AVOS 1410 A5-37/70	AVOS 1410 A5-45/80	AVOS 1410 A5-60/80	AVOS 1410 A5-90/100
Machine length	10160 mm	10160 mm	10160 mm	10160 mm
Machine width	2400 mm	2400 mm	2400 mm	2400 mm
Machine height	3900 mm	3900 mm	3900 mm	3900 mm
Feeding hopper cross section	1400 x 1000 mm	1400 x 1000 mm	1400 x 1000 mm	1400 x 1000 mm
Dead weight approx.	23000 kg	24000 kg	25500 kg	26000 kg
Bale size (W x H)	1100 x 750 mm	1100 x 750 mm	1100 x 750 mm	1100 x 750 mm
Bale weight* up to	550 kg	650 kg	650 kg	700 kg
Channel adjustment	3-sided automatically	3-sided automatically	3-sided automatically	3-sided automatically
Cycle time (empty)	16.7 sec	16.7 sec	8.4 sec	10.3 sec
Idle speed capacity (theoretically)	226 m <sup>3</sup> /h	226 m <sup>3</sup> /h	452 m <sup>3</sup> /h	368 m <sup>3</sup> /h
Throughput** 35 kg/m <sup>3</sup> (cardboard)	6.5 t/h	6.5 t/h	9.4 t/h	9.4 t/h
Throughput** 60 kg/m <sup>3</sup> (cardboard, paper)	8.1 t/h	8.1 t/h	16.2 t/h	13.2 t/h
Throughput** 100 kg/m <sup>3</sup> (newspapers)	15.5 t/h	16.0 t/h	24.0 t/h	22.0 t/h
Specific press force	84.8 N/cm <sup>2</sup>	97.0 N/cm <sup>2</sup>	97.0 N/cm <sup>2</sup>	121.2 N/cm <sup>2</sup>
<b>Press force</b>	<b>700 kN</b>	<b>800 kN</b>	<b>800 kN</b>	<b>1000 kN</b>
<b>Drive capacity</b>	<b>37 kW</b>	<b>45 kW</b>	<b>2 x 30 kW</b>	<b>2 x 45 kW</b>

\* depending on bale length and material, \*\* relating to apparent weight

### Valid for all machine types

Adjustable bale length; Binding: 5-fold vertically; Electricity: 3 x 400 V, N, PE/50 Hz



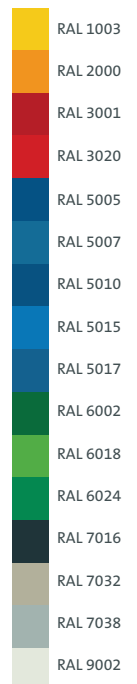


## HORIZONTAL BALER TYPE AVOS 1810

Modern technology for substantial waste quantities



Standard  
RAL-colours



### Go for flexibility

You will get your horizontal baler type AVOS 1810 optionally...

... with multifunctional touch-screen display for function and signal queries

... with conveyor belt to feed the baler continuously and constantly

... with AVERMANN special press-ram to compact bulky materials

### Your advantages:

- ✓ Large-scale feeding chute
- ✓ Compaction of extremely high quantities of waste or recyclable materials
- ✓ Well-proven technology thanks to more than 25 years of experience

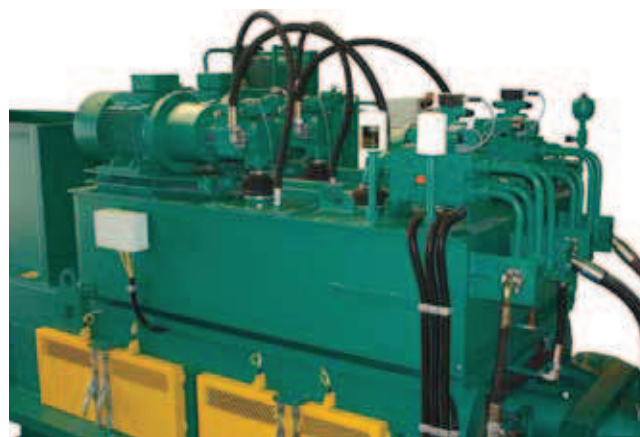
Further RAL-colours on demand at extra charge.



## ■ Horizontal baler type AVOS 1810



## ■ Hydraulic unit of an AVOS 1810



## High throughput and press force

**Optimum compaction of large waste quantities and bulky goods:** Purchasing this type of horizontal baler you profit from all technical advantages of our horizontal baler series. Moreover, the drive of the baler can be effected by one or two axial piston pumps. Thus on

the one hand a power-saving drive with only one pump and on the other hand a high throughput capacity using two pumps is possible. The large feeding chute (1800 x 1000 mm) enables a non-blocking, comfortable feeding - also for bulky materials.

### Technical data

	AVOS 1810-55/80	AVOS 1810-90/80	AVOS 1810-90/100	AVOS 1810-110/100
Machine length	11200 mm	11200 mm	11200 mm	11200 mm
Machine width	2400 mm	2400 mm	2400 mm	2400 mm
Machine height	3900 mm	3900 mm	3900 mm	3900 mm
Feeding hopper cross section	1800 x 1000 mm	1800 x 1000 mm	1800 x 1000 mm	1800 x 1000 mm
Dead weight approx.	26000 kg	27000 kg	28000 kg	28000 kg
Bale size (W x H)	1100 x 750 mm	1100 x 750 mm	1100 x 750 mm	1100 x 750 mm
Bale weight* up to	650 kg	650 kg	700 kg	700 kg
Channel adjustment	3-sided automatically	3-sided automatically	3-sided automatically	3-sided automatically
Cycle time (empty)	20.4 sec	10.2 sec	12.5 sec	12.5 sec
Idle speed capacity (theoretically)	238 m <sup>3</sup> /h	476 m <sup>3</sup> /h	388 m <sup>3</sup> /h	388 m <sup>3</sup> /h
Throughput** 35 kg/m <sup>3</sup> (cardboard)	5.0 t/h	12.5 t/h	12.1 t/h	12.1 t/h
Throughput** 60 kg/m <sup>3</sup> (cardboard, paper)	8.5 t/h	20.0 t/h	16.0 t/h	15.5 t/h
Throughput** 100 kg/m <sup>3</sup> (newspapers)	14.2 t/h	28.5 t/h	23.2 t/h	23.2 t/h
Specific press force	97.0 N/cm <sup>2</sup>	97.0 N/cm <sup>2</sup>	121.2 N/cm <sup>2</sup>	121.2 N/cm <sup>2</sup>
<b>Press force</b>	<b>800 kN</b>	<b>800 kN</b>	<b>1000 kN</b>	<b>1000 kN</b>
<b>Drive capacity</b>	<b>55 kW</b>	<b>2 x 45 kW</b>	<b>2 x 45 kW</b>	<b>2 x 55 kW</b>

\* depending on bale length and material, \*\* relating to apparent weight

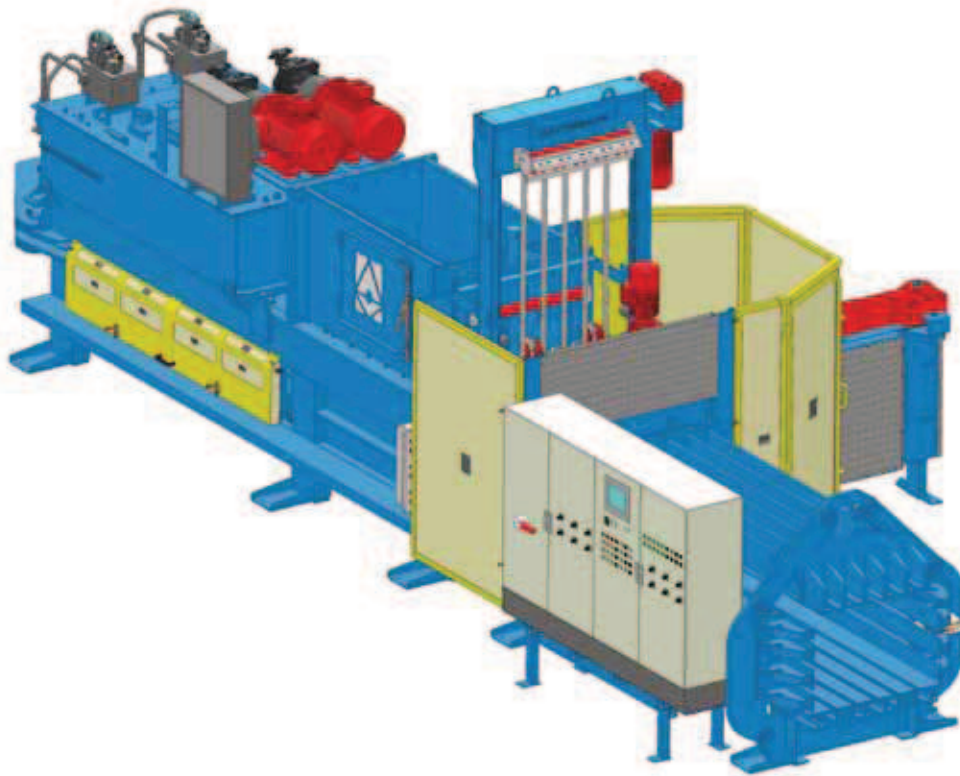
### Valid for all machine types

Adjustable bale length; Binding: 5-fold vertically; Electricity: 3 x 400 V, N, PE/50 Hz



## HORIZONTAL BALER TYPE AVOS 1810 RK

### Innovation and tradition



#### Standard RAL-colours

	RAL 1003
	RAL 2000
	RAL 3001
	RAL 3020
	RAL 5005
	RAL 5007
	RAL 5010
	RAL 5015
	RAL 5017
	RAL 6002
	RAL 6018
	RAL 6024
	RAL 7016
	RAL 7032
	RAL 7038
	RAL 9002

Further RAL-colours on demand at extra charge.

### Optimum output power by...

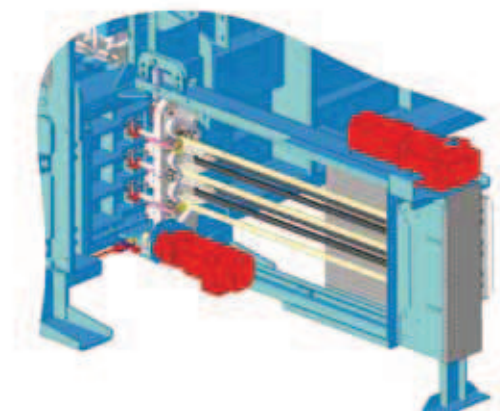
- ... programmable PLC control unit
- ... 5 programme selector switches
- ... separate heating, cooling and filter cycle for the hydraulic oil
- ... roller guided press-ram
- ... cross-binding

### Optional special equipment:

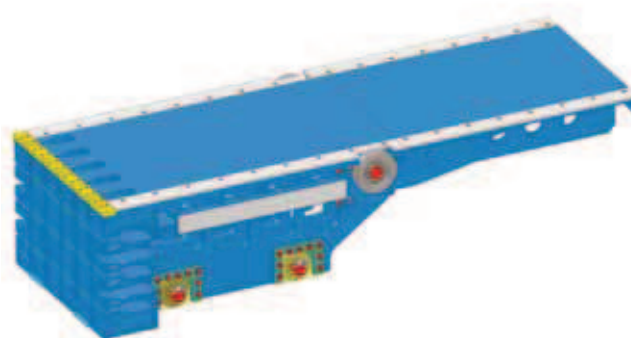
- ✓ Ruffler
- ✓ Bale slide
- ✓ Feeding chute
- ✓ Material re-holder
- ✓ Inclined conveyor belt
- ✓ Bin-lift device
- ✓ Wire end control
- ✓ Wire coil holder (400 kg)
- ✓ Perforator/rotary shredder
- ✓ Maintenance platform
- ✓ Operator protection system



## ■ Horizontal 3-fold binding



## ■ Press-ram with roller guiding



## Effective, efficient and powerful

**Efficiency and high serviceability in solid design:** Thanks to the cross-binding a safe and optimum compaction of fine-grained and strongly expansive materials is possible. The high throughput and the redundant drive via two energy-saving, powerful hydraulic pumps allow a

substantial range of operations. Furthermore the state-of-the-art key transfer system guarantees highest safety standard for exemplary operating safety. Profit from these advantages and our know-how!

### Technical data

	AVOS 1810 RK-90/80	AVOS 1810 RK-90/100	AVOS 1810 RK-110/100
Machine length	11200 mm	11200 mm	11200 mm
Machine width	2400 mm	2400 mm	2400 mm
Machine height	3900 mm	3900 mm	3900 mm
Feeding hopper cross section	1800 x 1000 mm	1800 x 1000 mm	1800 x 1000 mm
Dead weight approx.	29000 kg	29000 kg	30000 kg
Bale size (W x H)	1100 x 750 mm	1100 x 750 mm	1100 x 750 mm
Bale weight* up to	700 kg	750 kg	800 kg
Channel adjustment	3-sided automatically	3-sided automatically	3-sided automatically
Cycle time (empty)	10.2 sec	12.5 sec	12.5 sec
Idle speed capacity (theoretically)	476 m <sup>3</sup> /h	388 m <sup>3</sup> /h	388 m <sup>3</sup> /h
Throughput** 35 kg/m <sup>3</sup> (cardboard)	15.5 t/h	15.0 t/h	15.5 t/h
Throughput** 60 kg/m <sup>3</sup> (cardboard, paper)	22.5 t/h	20.0 t/h	21.0 t/h
Throughput** 100 kg/m <sup>3</sup> (newspapers)	33.0 t/h	29.0 t/h	30.0 t/h
Specific press force	97.0 N/cm <sup>2</sup>	121.2 N/cm <sup>2</sup>	121.2 N/cm <sup>2</sup>
<b>Press force</b>	<b>800 kN</b>	<b>1000 kN</b>	<b>1000 kN</b>
<b>Drive capacity</b>	<b>2 x 45 kW</b>	<b>2 x 45 kW</b>	<b>2 x 55 kW</b>

\* depending on bale length and material, \*\* relating to apparent weight

### Valid for all machine types

Adjustable bale length; Binding: 5-fold vertically, 3-fold horizontally; Electricity: 3 x 400 V, N, PE/50 Hz