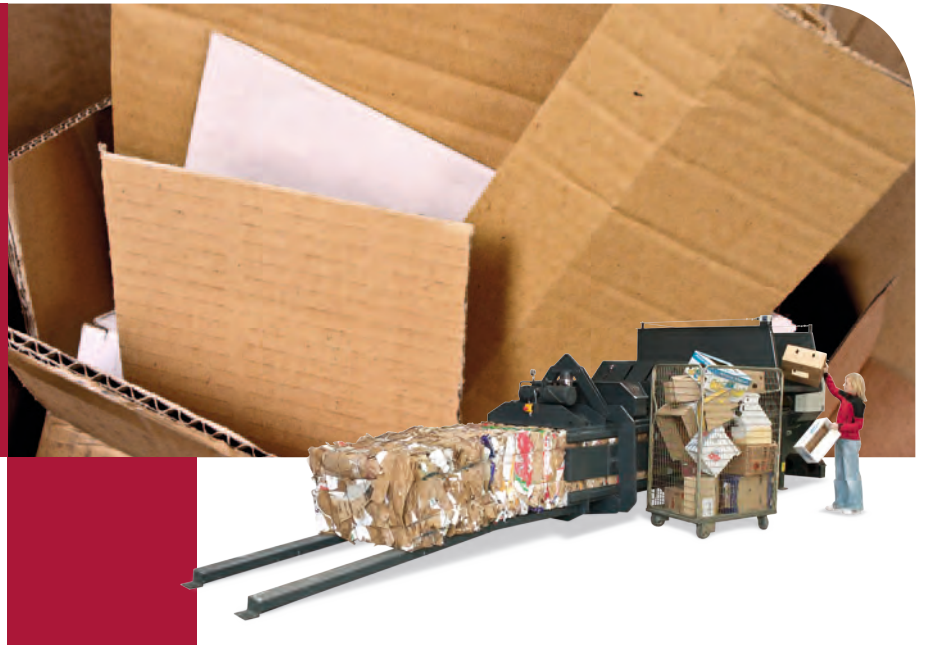


# Horizontal balers HC50 L



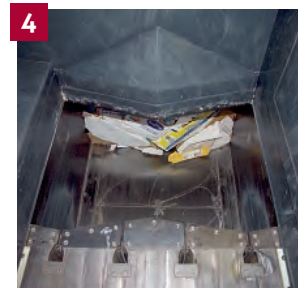
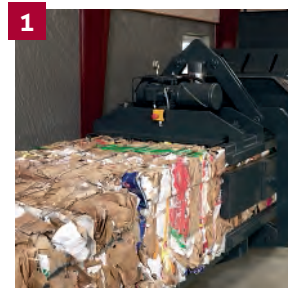
## FOR LARGER DEMANDS

The HC50 L is suitable for customers who have very large volumes of cardboard, plastic or paper.

The baler can be loaded continuously and the bales are tied automatically, when the selected bale length is reached.



Technical specifications	
Press force (t)	50
Power supply	3x400V 50Hz 100A
Motor (kW)	30
Noise level (dB)	74
Cycle time (sec)	19
Dimensions LxWxH (mm)	8500 x 2190 x 2550
Weight (kg)	12000
Filling opening LxW (mm)	1600 x 1050
Filling height (mm)	1700
Number of wires	4
Capacity (t/h)	0-6
Bale size LxWxH (mm)	1200 x 1100 x 700
Bale weight cardboard (kg)	400-500
Bale weight plastic (kg)	450-550



**1** The bale is tied automatically. **2** The finished bales are pushed forward. **3** The baling channel adjusts automatically to keep the bale density constant. **4** Strong and hard-wearing shear blade cuts the material.

- **Very wide filling opening**  
Advantage when filling larger boxes
- **Fully automatic solution**  
Bales are tied automatically
- **Flexible output**  
The bale length can be adjusted