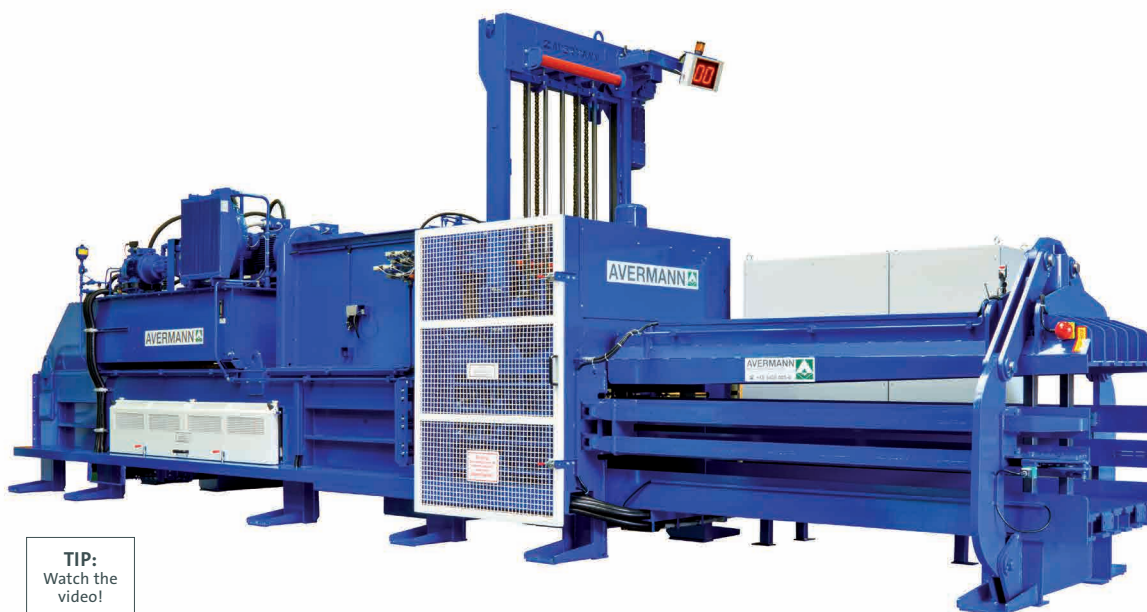
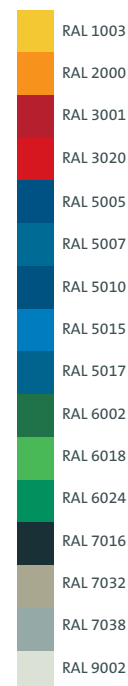




## HORIZONTAL BALER TYPE AVOS 1810 B5 Superior technology for continuous operation



Standard  
RAL-colours



■ AVOS 1810 B5-110/100

**TIP:**  
Watch the  
video!



### Go for flexibility

You will get your horizontal  
baler type AVOS 1810 B5 optionally...

- ... with touch-screen display
- ... with feeding conveyor to fill the baler evenly and continuously
- ... with AVERMANN special press ram to compact bulky materials
- ... with press ram guiding either on plastic rails or steel rollers
- ... with cross-binding

### Your advantages:

- ✓ Large-scale feeding chute
- ✓ Compaction of extremely high quantities of waste or recyclable materials
- ✓ Well-proven technology thanks to more than 30 years of experience

Further RAL-colours on demand at extra charge.



■ AVOS 1810 B5 with cross-binding



■ AVOS 1810 B5 at quality check



## Effective, economical and powerful

By using the horizontal baler type AVOS 1810 B5 you can compact large waste quantities quickly and safely. The press ram guiding is done either on plastic rails or steel rollers. To compact fine-grained and highly expansive materials the AVOS 1810 B5 can be equipped with a cross-binding unit. The high throughput via either one

or two energy saving, high-performance hydraulic pumps allows an extensive range of applications. Furthermore, the state-of-the-art key transfer system guarantees highest safety standards for exemplary operating safety. Profit from these advantages and our know-how!

### Technical data

	AVOS 1810 B5-55/80	AVOS 1810 B5-90/80	AVOS 1810 B5-90/100	AVOS 1810 B5-110/100
Machine length	11200 mm	11200 mm	11200 mm	11200 mm
Machine width	2400 mm	2400 mm	2400 mm	2400 mm
Machine height	3900 mm	3900 mm	3900 mm	3900 mm
Feeding hopper cross section	1800 x 1000 mm	1800 x 1000 mm	1800 x 1000 mm	1800 x 1000 mm
Dead weight approx.	26000 kg	27000 kg	28000 kg	28000 kg
Bale size (W x H)	1100 x 750 mm	1100 x 750 mm	1100 x 750 mm	1100 x 750 mm
Bale weight* up to	650 kg	650 kg	700 kg	700 kg
Channel adjustment	3-sided automatically	3-sided automatically	3-sided automatically	3-sided automatically
Cycle time (empty)	20.4 sec	10.2 sec	12.5 sec	12.5 sec
Idle speed capacity (theoretical)	238 m <sup>3</sup> /h	476 m <sup>3</sup> /h	388 m <sup>3</sup> /h	388 m <sup>3</sup> /h
Throughput** 35 kg/m <sup>3</sup> (cardboard)	5.0 t/h	12.5 t/h	12.1 t/h	12.5 t/h
Throughput** 60 kg/m <sup>3</sup> (cardboard, paper)	8.5 t/h	20.0 t/h	16.0 t/h	17.5 t/h
Throughput** 100 kg/m <sup>3</sup> (newspapers)	14.2 t/h	28.5 t/h	23.2 t/h	26.2 t/h
Specific press force	97.0 N/cm <sup>2</sup>	97.0 N/cm <sup>2</sup>	121.2 N/cm <sup>2</sup>	121.2 N/cm <sup>2</sup>
Press force	800 kN	800 kN	1000 kN	1000 kN
Drive capacity	55 kW	2 x 45 kW	2 x 45 kW	2 x 55 kW

\* depending on bale length and material, \*\* relating to apparent weight

### Valid for all machine types

Adjustable bale length; Binding: 5-fold vertically; optional with cross-binding: 5-fold vertically, 3-fold horizontally; Electricity: 3 x 400 V, N, PE/50 Hz